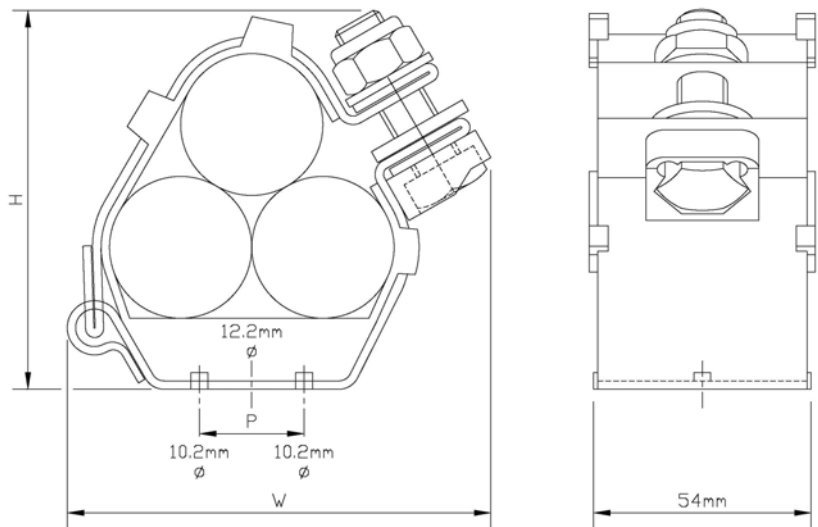


## Data Sheet: Ellis Patents EMPEROR Trefoil Cable Cleat with LSF Liner

Emperor cable cleats are recommended for installations where the highest levels of short circuit withstand are required. In addition to trefoil applications, Emperor cable cleats are available for single, dual, triplex (using optional 'SFT' cable surround), quad and bundled cable applications. Emperor cable cleats are independently certified to BS EN 50368:2003, Category-2 resistance to electromechanical forces during short circuits (i.e. cable and cleats are intact and reusable after two successive short circuit tests). To protect and cushion cables, Emperor cleats incorporate an integral low smoke, low fume, zero halogen liner in its unique patented design. Recommended fixing methods include one bolt, two bolts, weld stud or framing strut mounting. Optional rung adapters are available to mount Emperor cable cleats to non-perforated ladder tray rungs.



Part No	Cable Range (mm)		Dimensions (mm)			Weight (kg)
	Min Dia	Max Dia	H	W	P	
ER23-28	23	28	83	96	25	0.425
ER27-32	27	32	88	97	25	0.440
ER30-35	30	35	91	99	25	0.455
ER33-38	33	38	95	103	25	0.460
ER36-42	36	42	100	124	50	0.610
ER40-46	40	46	106	125	50	0.610
ER44-50	44	50	117	130	50	0.630
ER48-55	48	55	121	132	50	0.640
ER51-58	51	58	128	136	50	0.650
ER55-62	55	62	135	160	75	0.810
ER59-66	59	66	143	163	75	0.825
ER63-70	63	70	151	166	75	0.850
ER67-74	67	74	158	169	75	0.850
ER71-78	71	78	165	172	75	0.890
ER74-82	74	82	171	177	75	0.890
ER77-85	77	85	177	183	75	0.905
ER82-88	82	88	187	191	75	0.905
ER88-96	88	96	203	207	75	0.950
ER96-103	96	103	218	221	75	0.950
ER103-111	103	111	235	237	75	1.140
ER111-119	111	119	250	253	75	1.150
ER119-128	119	128	275	265	75	1.220

BS EN 50368:2003 (Cable Cleats for Electric Installations) Classification	
Cleat Type	Composite
Operating Temperature Range	-40°C to + 60°C
Resistance to Electromechanical Force (Refer to kVA Strategies for Details)	Category-1: 235kA <sub>PEAK</sub> / 109kA <sub>RMS</sub> Category-2: 178kA <sub>PEAK</sub> / 83kA <sub>RMS</sub>
Lateral Load Test	Refer to kVA Strategies
Axial Load Test	650N
Impact Resistance	Very Heavy (>6.7kg @ 300mm)
Needle Flame Test	>120 seconds

Technical Specifications	
Frame	50mm W x 2mm Thick Marine Grade, Non-magnetic 316L Stainless Steel ( BS EN 10088)
Closure Hardware	316L Stainless Steel M12 Bolt, Nyloc Nut & Flat Washer (BS 3692)
Integral LSF Liner	Low Smoke, Low Fume Zero Halogen Polymer
Tools Required	3/4" or 19mm
Installation Features	Captive Closure Bolt 1 or 2 Bolt Mounting (3/8" Max Dia)