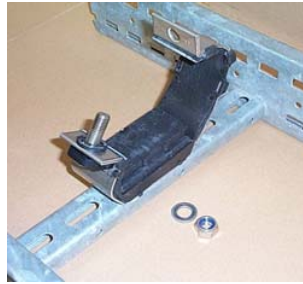


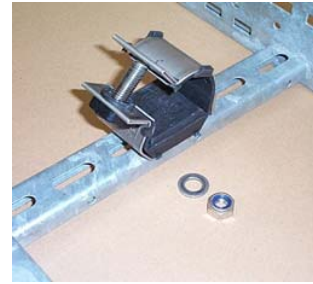
Installation Instructions Emperor Cleat

- 1) Remove the closing nut and washer.

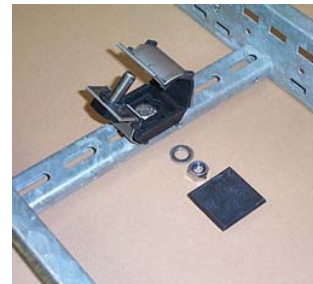
Trefoil Cable



Single Cable



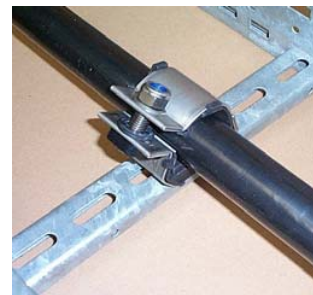
- 2) Remove the base pad and bolt the cleat to support structure using either the single central or two outer fixing positions.



- 3) Replace the appropriate pad and install the cables.



- 4) Close the hinged arm and refit the washer and nyloc nut (19mm socket required). The head of the screw is held in position so that only a single power tool is required to tighten the nut from one side.



- 5) **Important.** Do not over tighten the cleat. The liner should be in contact with the cable but does not need to be so tight that the cable bulges at either side of the liner.



Please note: Thread galling is a known phenomenon which can occur when using stainless steel fasteners. A breakdown in the material's protective oxide layer results in the set screw and nut becoming welded together. To reduce the incidence of thread galling excessive pressure and speed should be avoided during installation. Thread lubricants can also be used at the point of application if problems are experienced - please contact Ellis Patents for further information.